



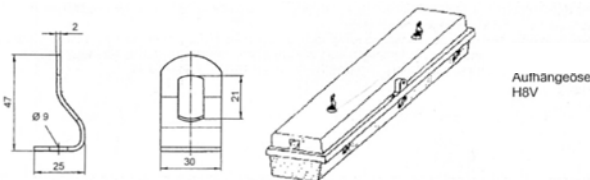
MINING FLUORESCENT LIGHT FITTINGS



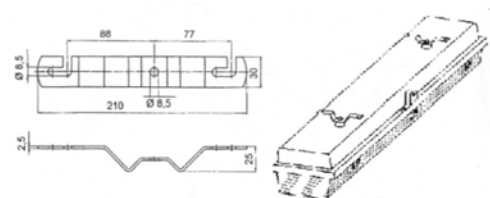
Technical data	
Type of protection	I M2 EEx edq I
Certificate	IBExU 00 ATEX 1090
Degree of protection	IP 66
Insulation class	I
Rated voltage	220-240V AC/DC
Ambient temperature	-20 °C to + 50 °C
Enclosure	Sheet metal, painted in RAL 7035
Glass	Polycarbonat
Terminals	L1+L2+UL+PE, 10mm ²
Terminals trough wiring	6x10mm ²
Cable glands	2xM36x1,5 – standard 3xM36x1,5 or M40x1,5 - option
Integrated isolating switch	

Light fitting for G13 Bi-pin fluorescent lamps				
LAMPS	CIRCUIT	TYPE Ended	TYPE Through wiring	Weight
1x18	EVG	e 13021 EVG	e 13021 EVG -DV	8,3 kg
2x18	EVG	e 13022 EVG	e 13022 EVG - DV	8,8 kg
1x36	EVG	e 13041 EVG	e 13041 EVG - DV	13,5 kg
2x36	EVG	e 13042 EVG	e 13042 EVG - DV	13,8 kg

Fitting material



Type H8V



Type 15A

Dimensions

