



FLUORESCENT LIGHT FITTINGS FOR PAINT CABINS



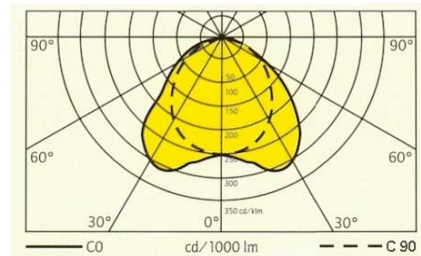
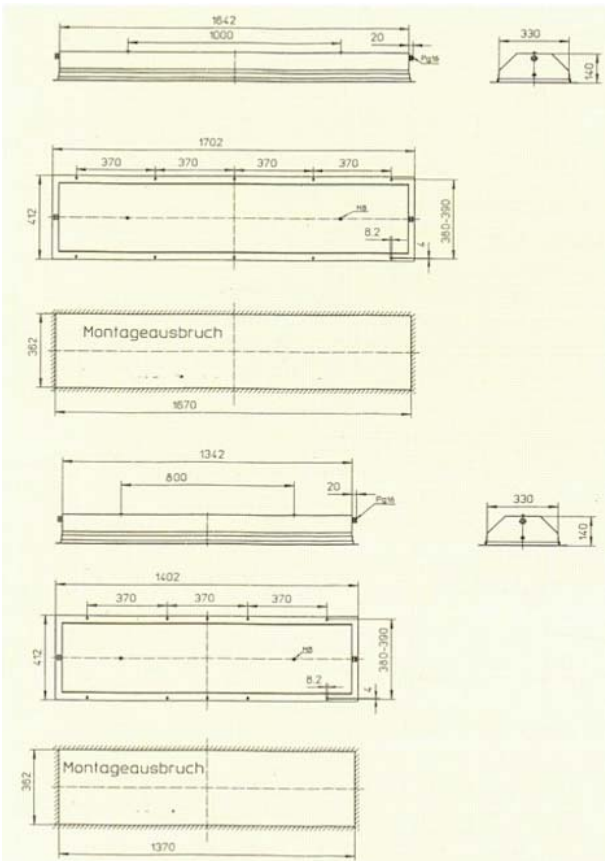
Technical data

	PTB 99 ATEX 2192 PTB 99 ATEX 2193
Type of protection	II 2 G EEx de IIC T4
Degree of protection	IP 66
Insulation class	I
Rated voltage	AC: 230V +10%/-8% 50/60Hz DC: 230V +9%/-13%
Ambient temperature	-30 °C to + 50 °C
Circuit	EVG

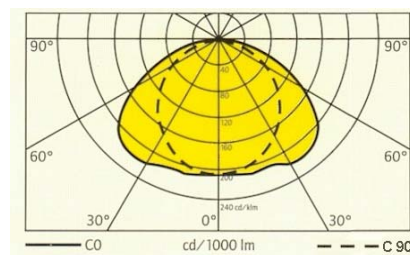
Light fitting for G13 bi-pin fluorescent lamps

Lamps	EVG	Type
	EVG	6132
3 x 36	EVG	6133
4 x 36	EVG	6134
2 x 58	EVG	6152
3 x 58	EVG	6153
4 x 58	EVG	6154

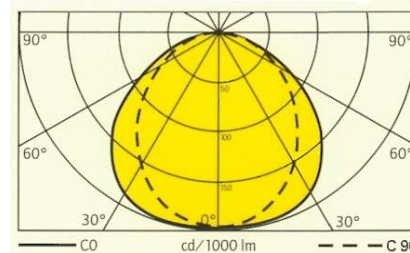
Dimensions



Polar curve – 2 lamps
Light efficiency
81,7 %



Polar curve – 3 lamps
Light efficiency
69,5 %



Polar curve – 4 lamps
Light efficiency
55,4 %